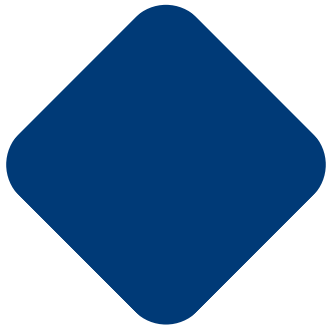




April 2026



PRODUCT CATALOG

2026

AUTOMOTIVE

WWW.HBENTERPRISES.CO

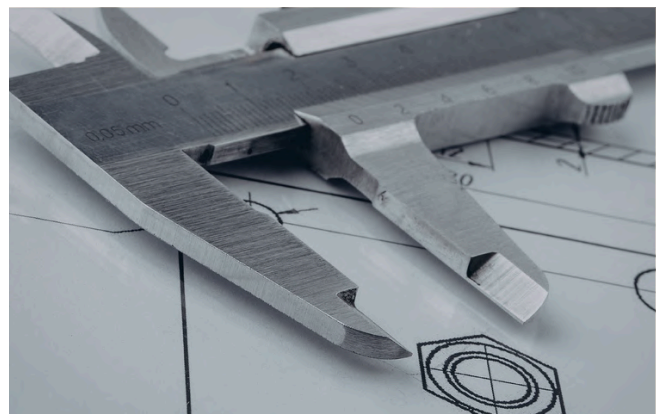


About Us

Established in **2008**, we started our journey as a manufacturer of sheet metal stamping components serving the automotive and electrical industries. Over the years, we expanded our capabilities to include prototyping, sub-assemblies, mechanical assemblies, and other manufacturing solutions.

We focus on supplying reliable automotive **components** and **assemblies** that meet application requirements, with emphasis on consistent quality and dependable performance.

Today, we support our customers with quality components and products manufactured using precision tooling and controlled production processes.



Quality

Our manufacturing processes are structured to maintain **consistent quality** in components and assemblies. Production is carried out using controlled processes, suitable tooling, and regular in-process and final inspections to ensure products meet required specifications.

We focus on maintaining dimensional accuracy, material requirements, and stable production conditions throughout manufacturing.

We are **IATF 16949, ISO 9001** and **ISO 14001** certified, reflecting our commitment to quality management and automotive industry standards.



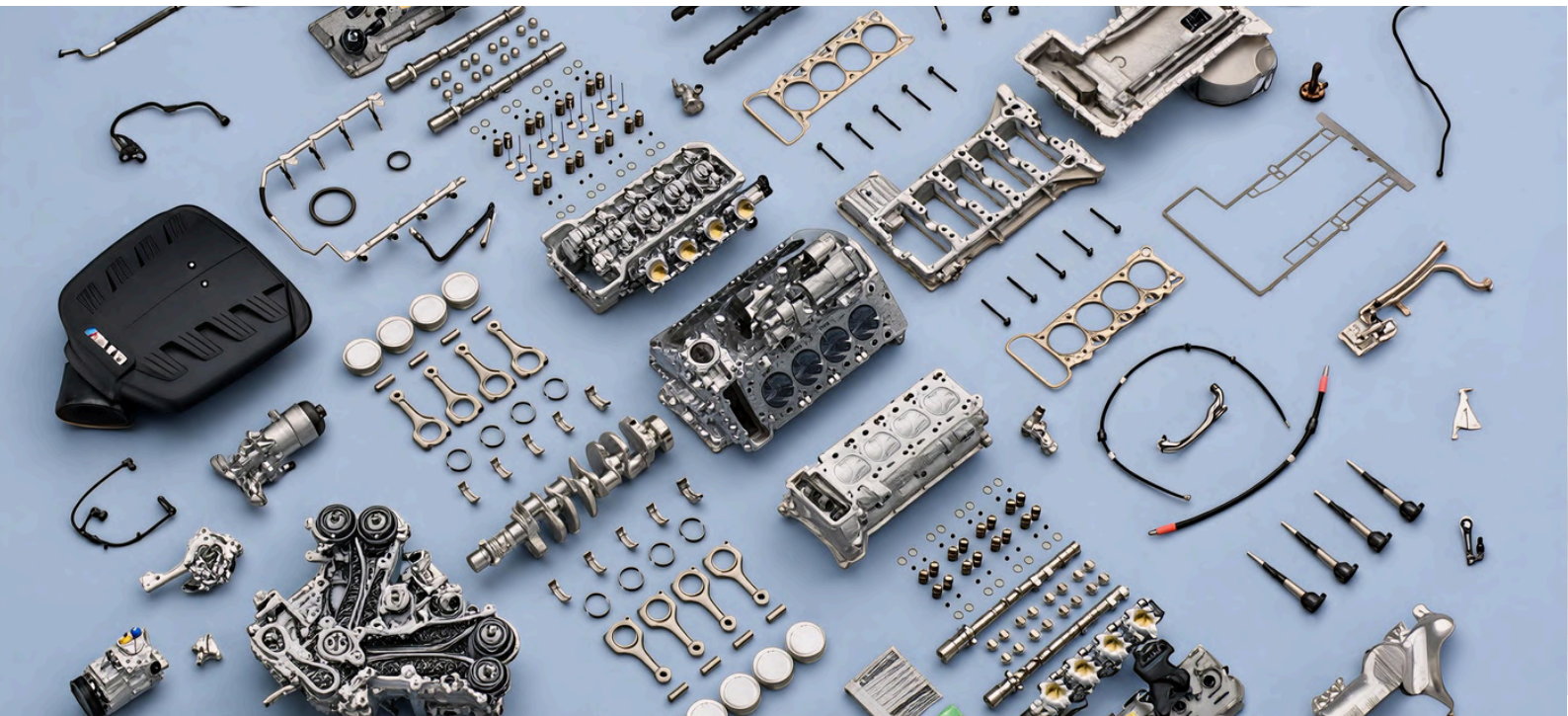
Products & Capabilities

Our current product range includes **Automotive Horn** product are manufactured with controlled production processes to ensure reliable performance and consistent quality.

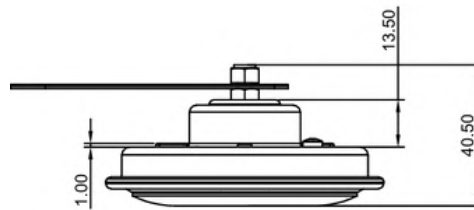
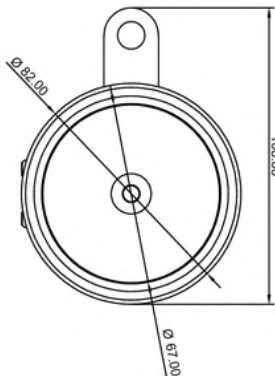
Along with this, we are focusing on developing additional automotive and electrical components to expand our product range.

Our manufacturing capabilities include **Stampings, Assemblies, Prototyping, and Tooling** development, supporting both new product development and regular production.

We aim to continuously strengthen our product portfolio to meet customer needs.



Horn

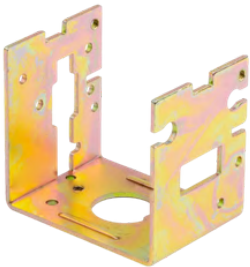


Perfect Tone

Details:

- Type : Electro Magnetic Disc
- Rated Voltage / Current : 12V / 3A
- Sound Pressure : 110 dB \pm 5 at 2m
- Frequency : 420 Hz \pm 20
- Application : Suitable for 2WH, 3WH & Pair for 4WH

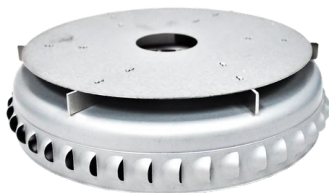
Metal Stampings



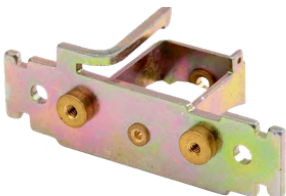
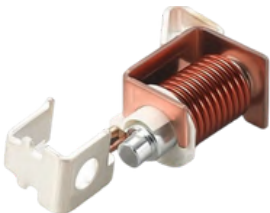
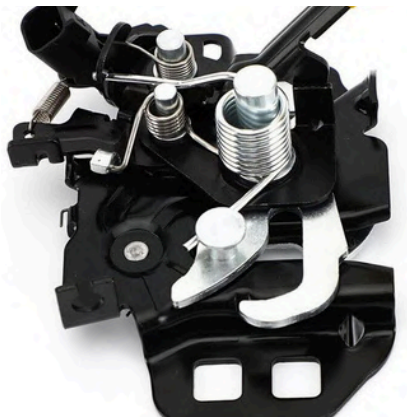
Precision Stampings



Deep Drawn



Assemblies



Prototyping

We support **product development** and **R&D** through prototyping using temporary soft tools and fixtures at lower cost. This helps customers evaluate design, fitment, and functionality before starting regular production.

Prototype parts are suitable for **trial requirements** and **low-volume** needs, allowing necessary adjustments during the development stage.

This process helps reduce development risk and supports a smoother transition into regular production.



Tooling

We have an **in-house facility** for tool design and development to support both product development and regular production requirements.

Our team works on **Progressive**, **Compound**, and **Stage** tools depending on part design and production volume.

The facility is supported with adequate machinery and equipment required for tool manufacturing, modifications, and maintenance to ensure reliable tool performance during production.

This helps in maintaining production efficiency and consistent part quality.

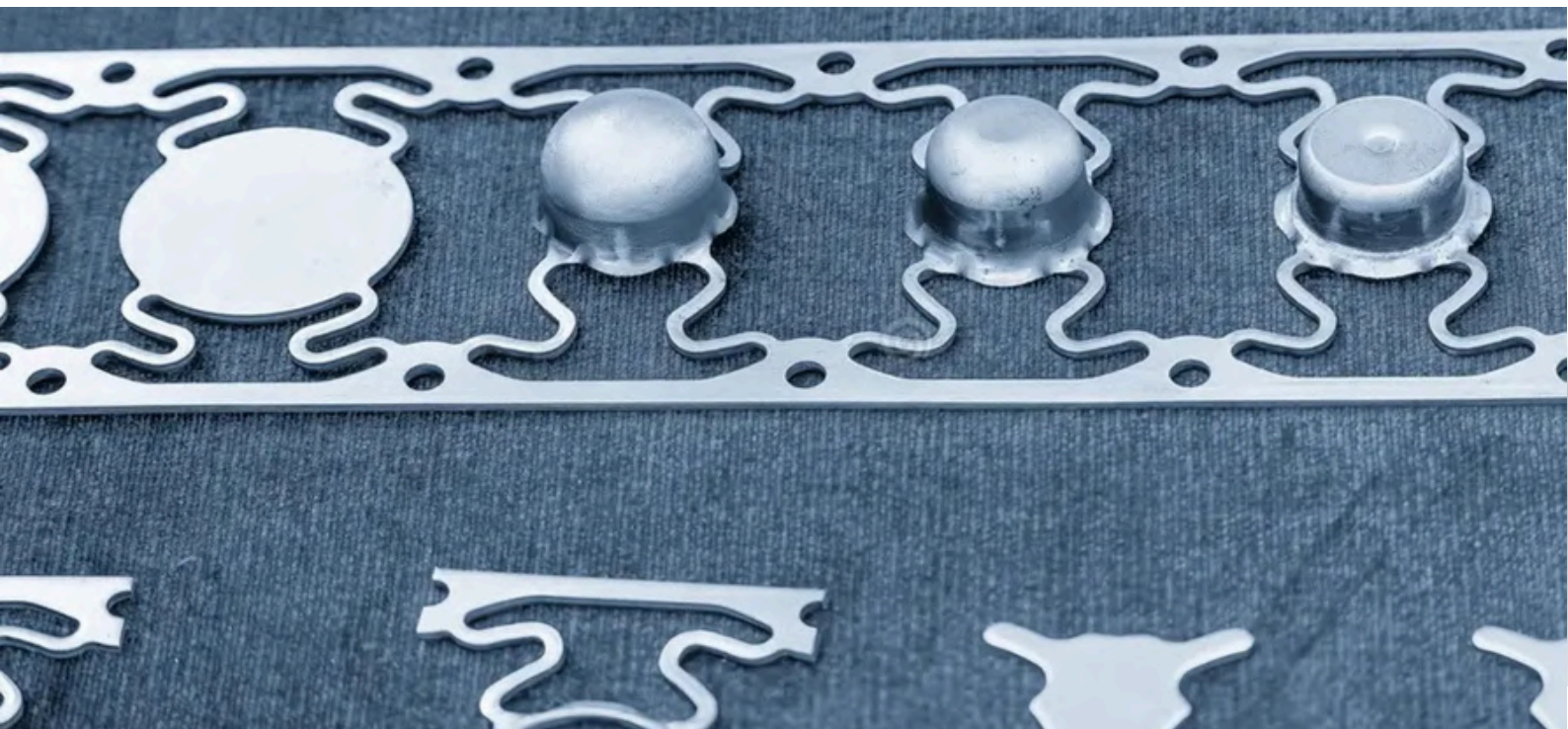


Progressive

Our facility is equipped to carry out **progressive stamping operations** for efficient and consistent production of components.

Progressive tooling allows multiple operations to be performed in a single process, helping **reduce** overall component cost while improving production efficiency.

This process supports higher production volumes, better repeatability, and stable manufacturing output for regular production requirements.



Why Us ?

Consistent Quality & Process Control

Parts / Components are carried out with defined processes and regular inspections to maintain consistent product quality and meet required specifications.

Competitive & Cost-Effective Solutions

We focus on efficient and cost-saving manufacturing practices to offer products at competitive prices. As a medium scale supplier with limited / optimized overheads, we strive to provide the best possible value to our customers.

Wide Range of Solutions Under One Roof

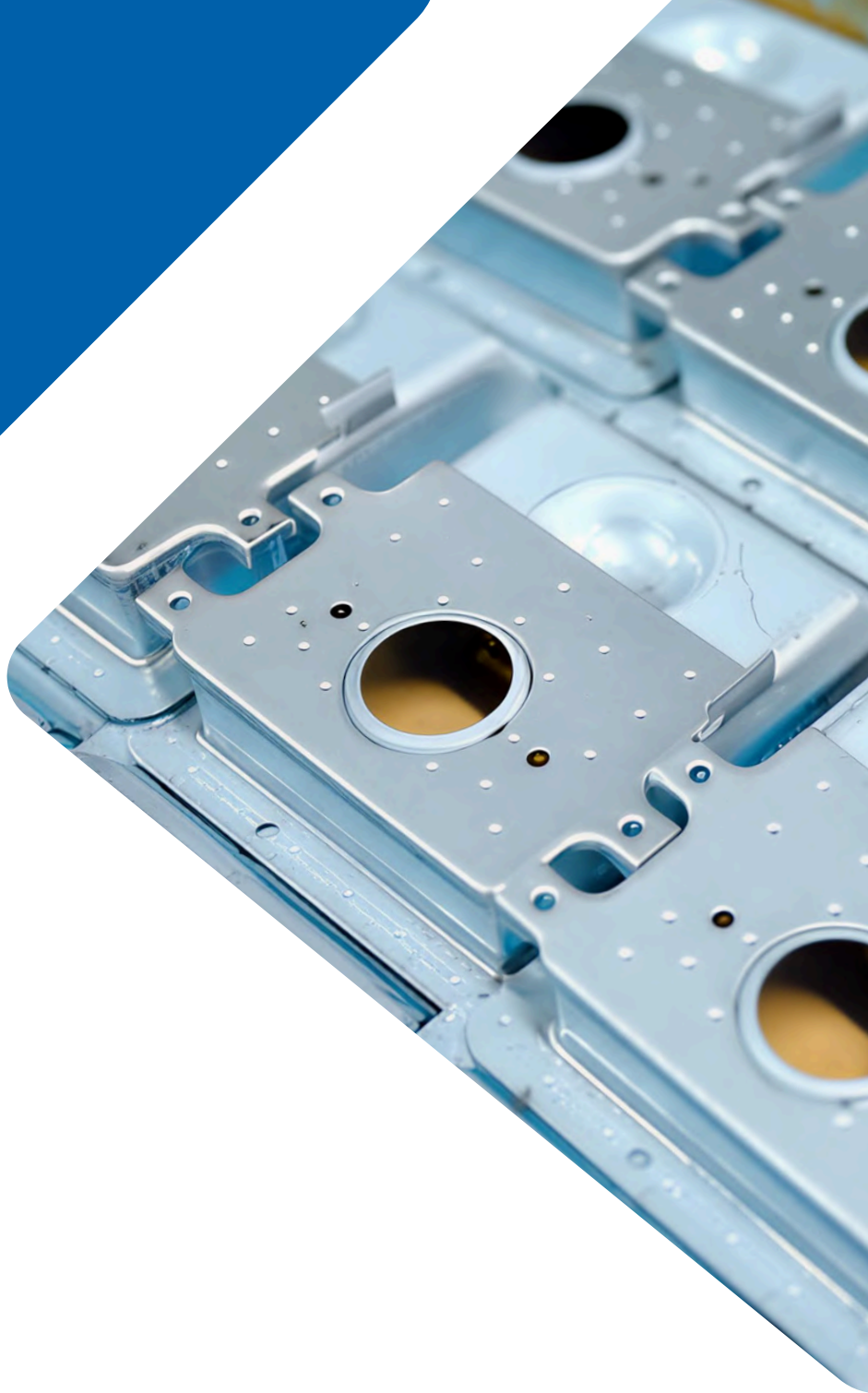
Multiple solutions including stamping, assemblies, prototyping, and tooling support are managed within our facility, allow us to act as a single supplier for various needs.

Prototyping, Tooling & Development, Sourcing Support

We support customers with prototype parts, tooling development, product development activities, and sourcing of additional components as per the requirements.

Reliable Delivery and Customer Support

We work to maintain stable production and timely supply while coordinating closely with customers to meet their requirements.



Address : Plot No. 46 & 159A, Sector-59, HSIIDC Industrial Area, Faridabad 121004, Haryana, India

Email : info.hbenterprises.co ; info.hben@gmail.com

Phone : +91-9205236317 ; 0129-4321815

Website : www.hbenterprises.co